

SPEC SHEET + MEASUREMENTS

SPORT-TEK

Sport-Tek® Youth Waterproof Insulated Jacket. YST56

Product photo



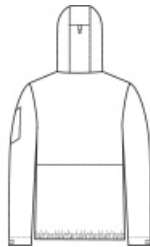
This fully seam-sealed, insulated jacket offers outstanding wind-resistant, water-repellent protection to help keep you dry in the stands or on the street.

- 100% polyester with waterproof face coating
- Fully seam-sealed
- Jersey-lined body and hood
- 2.4-ounce polyfill insulation in body
- 1.8-ounce polyfill insulation in hood and sleeves
- Polyester taffeta sleeves for easy on/off
- 5000MM fabric waterproof rating
- 3000G/M² fabric breathability rating
- Tag-free label
- Exposed molded zipper
- No drawcord at hood
- Left arm zippered pocket
- Adjustable self-fabric tab cuffs with hook and loop closures
- Front pouch pocket
- Decoration access pocket
- Elastic hem

Sketches



front



back

CARE INSTRUCTIONS

Machine Wash Cold With Like Colors Or Separate. Do Not Use Fabric Softener. Non-Chlorine Bleach When Needed. Tumble Dry Low. Do Not Iron.

SPEC SHEET + MEASUREMENTS



Sport-Tek[®] Youth Waterproof Insulated Jacket. YST56

PRODUCT MEASUREMENTS

	XS	S	M	L	XL
Size	4/5	6/8	10/12	14/16	18/20
Body Length at Back	19 1/2	21 1/2	23 1/2	25 1/2	27 1/2
Chest	16	17 1/2	19	20	21 1/2
Sleeve Length from Center Back	24	27	29 1/2	32	35

Body Length at Back: Measured from high point shoulder to finished hem at back.

Chest: Measured across the chest one inch below armhole when laid flat.

Sleeve Length from Center Back: Measure from Center Back neck to shoulder point to sleeve hem.

SIZE CHARTS

	XS	S	M	L	XL
Size	4/5	6/8	10/12	14/16	18/20
Chest	22-24	25-27	28-30	30-32	32-34

SPEC SHEET + MEASUREMENTS



Sport-Tek® Youth Waterproof Insulated Jacket. YST56

HOW TO MEASURE



CHEST

Measure under the arm and around the fullest part of the chest with arms down, keeping tape horizontal.

COLORS



Black
PMS BLACK
C



Forest Green
PMS 553C



Graphite
PMS 432C



True Navy
PMS 533C



True Royal
PMS 7687C